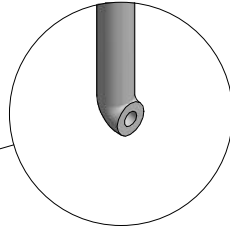
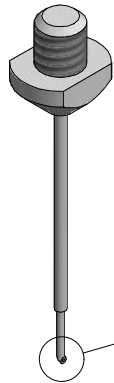
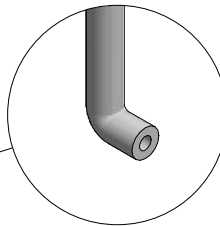
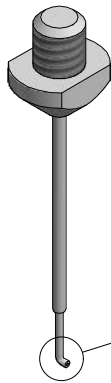


Comparatif de sélection des aiguilles de dosage SVM Escalub



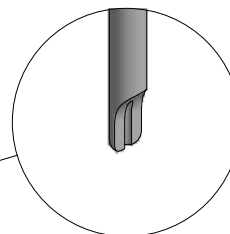
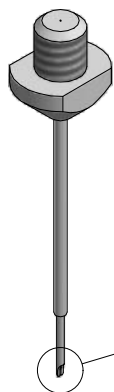
VERSION STANDARD

SVM Art. 384.201.C
Aiguille de dosage Escalub Ø 0.20 C
Sortie coudée et meulée courte



VERSION STANDARD RALLONGEE


SVM Art.384.201.C20
Aiguille de dosage Escalub Ø 0.20 C20
Sortie coudée et meulée lg. 0.20



ANCIENNE VERSION

SVM Art. 384.201
Aiguille de dosage Escalub Ø 0.20 x 10
Meulée droite

Version: 16.06.2020

DESIGNATION	<i>Aiguilles Escalub</i>	VALABLE POUR	<i>Escalub / Triax</i>
ART. SVM N°		VERSION	<i>1.0</i>
DATE	<i>23.06.2014</i>		
 SVM Micromécanique SA CH-2613 Villeret info@svm-micromecanique.ch svm-micromecanique.ch	DESSINE	Schneider Pierre	
	No 384.201.X		